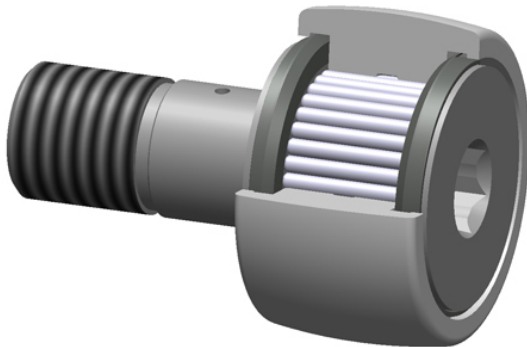




# Garlock BEARING MANUFACTURING LTD



## PCI Procal Inc. SCCF-3.25-SH Crowned & Flat Cam Followers Bearings

Bearing No. SCCF-3.25-SH

SCCF-3.25-SH Bearing 2D drawings and 3D CAD models

roller diameter:	3.2500 in
closure type:	Sealed
roller width:	1.7500 in
head type:	Hex
stud diameter:	1.2500 in
thread size:	1-1/4-12
stud length:	2.5000 in
radial dynamic load capacity:	17620 lbs
roller shape:	Crowned
radial static load capacity:	21200 lbs
roller material:	Chrome Steel
technical specifications:	<a href="#">Click here</a>
bearing element:	Needle Rollers